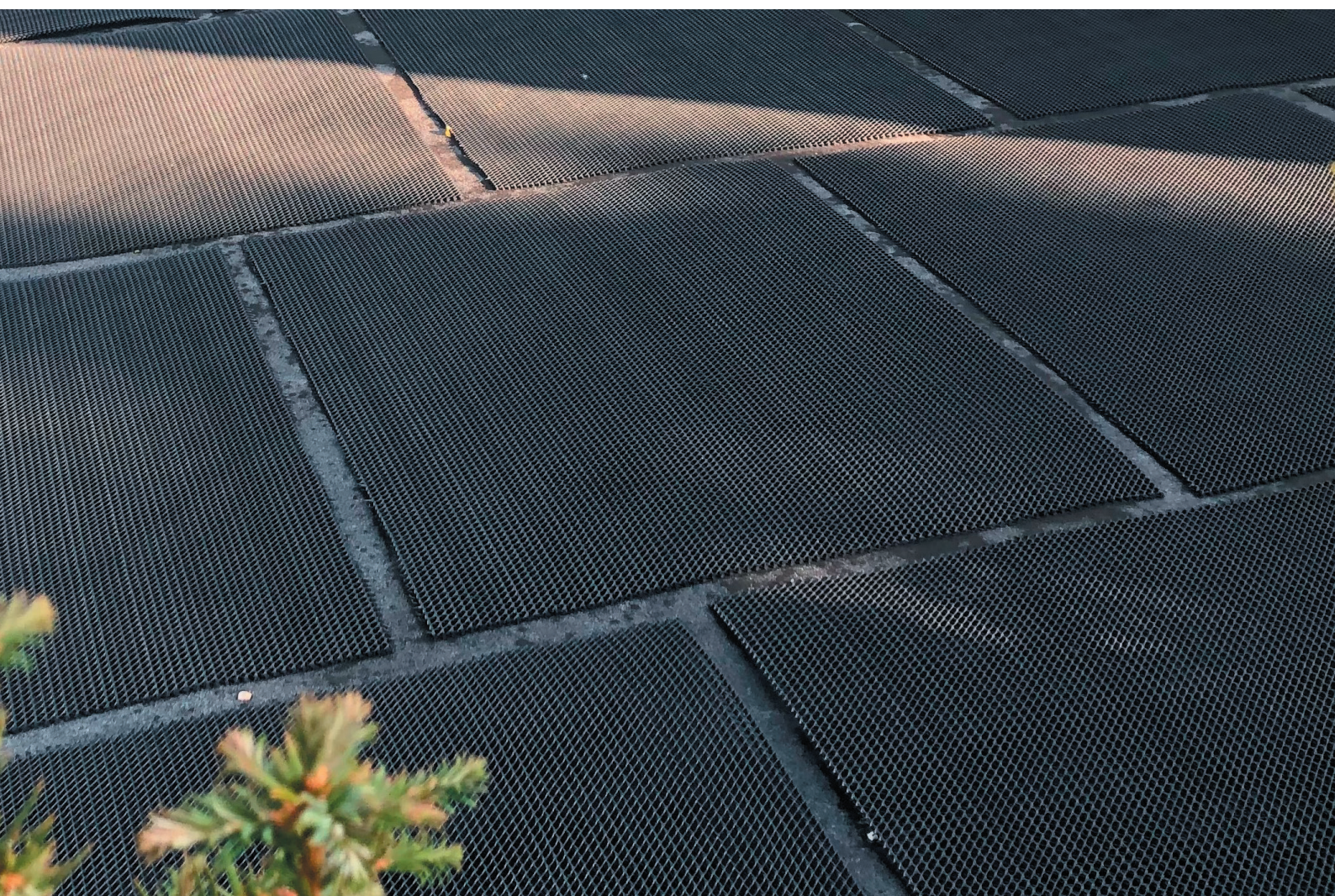


RESiSCAPE®

RESIN BOUND AGGREGATES



Reinforced Matting Systems

Guide to the Use & Installation

Reinforced Matting System

Resiscape Reinforced Matting is an innovative system that provides a decorative and natural looking permeable surface for laying resin bound aggregate systems, without the need for a concrete or asphalt base. The system can be applied directly on to most surfaces and gradients with minimum digging or edging required.

The structured build-up ensures a SuDS compliant surface, allowing water to drain through when used in conjunction with an appropriately designed permeable base and suitable sub-grade. Recommended for pedestrian footpaths or areas subject to light vehicular traffic.

Resiscape Reinforced Plastic Mat is a strong geonet mat laid with a high tenacity virgin polypropylene geotextile fabric. The mat is made with three sets of overlaid intersecting strands. The inner strands are thicker and heavier to provide a high compressive resistance and transmissivity. The intersecting strands form overlaid sets of continuous deep channels which provide a high flow capacity.

Resiscape Geotextile Fabric is manufactured from high tenacity virgin polypropylene giving higher tensile properties and improved durability. This unique process both needle punches and thermally bonds the fibres to form a stable network, which retains dimensional stability. The combination creates a strong geotextile, with an increased flow rate for drainage and a very fine pore size to prevent clogging.

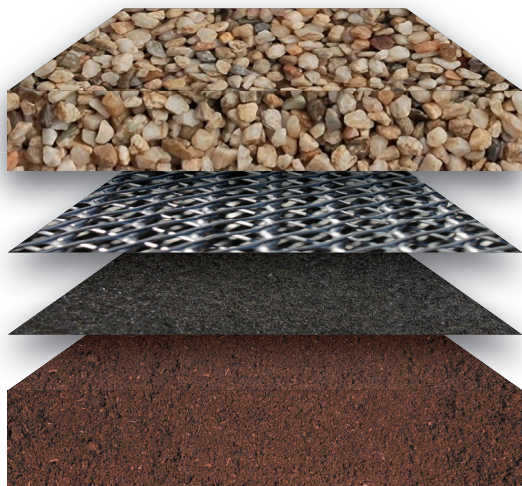
Application

The surface to be covered should be free from loose friable particles and leaves. A compacted Type 1 or Type 3 clean aggregate should be laid prior to application as per the recommended specifications below. To ensure a neat edge detail; we recommend a suitable aluminium, stone, steel, wood or brick edging although the system can be installed without, if required. If using an edging, fix this in place before laying the Resiscape Geotextile Fabric.

Unroll the Resiscape Geotextile Fabric over the area with a minimum of 300mm overlap. Pins may be used to secure the fabric to the surface below, if required (U Pins are available in our Luxigraze Accessory range).

Lay the Resiscape Reinforced Plastic Matting on top of the Resiscape Geotextile Fabric in a brick formation, taking care not to overlap any edges. Leave a gap between the matting (see diagram 1) to allow for expansion and contraction, as a result of hot and cold temperatures. Remove any bulges that occur, by cutting and straightening or weighting down.

Recommended Specification Foot Traffic Application



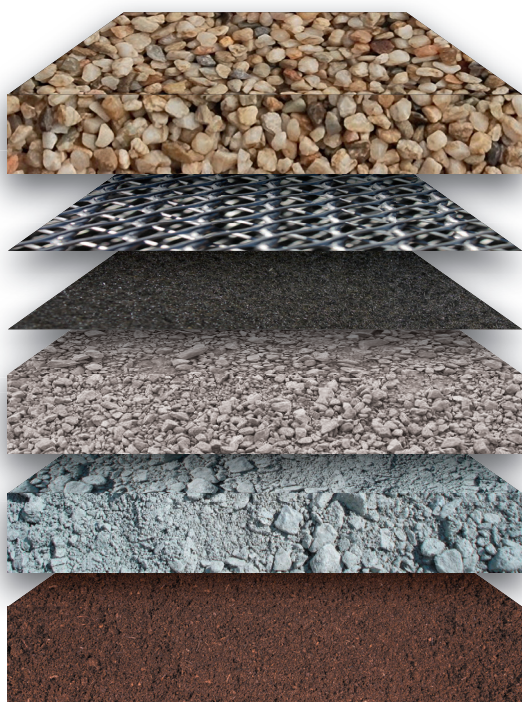
30mm Resiscape Resin Bound surface course, (approximately 5mm incorporated into the Reinforced Plastic Matting), hand applied and trowelled as per the Resiscape installation guide.

Resiscape Reinforced Plastic Matting 7.1mm.

Resiscape Geotextile Fabric 2.4mm.

Subgrade regulated as required, fill undulations with limestone to achieve a level surface for laying.

Recommended Specification Driveway Application



40mm Resiscape Resin Bound surface course, (approximately 5mm incorporated into the Reinforced Plastic Matting), hand applied and trowelled as per the Resiscape installation guide.

Resiscape Reinforced Plastic Matting 7.1mm.

Resiscape Geotextile Fabric 2.4mm.

Optional Limestone layer of 6-10mm aggregate in well compacted layers to level the surface.

For SUDS 150mm-225mm layer of Type 3 clean granular subbase in well compacted layers to a minimum fall of 1.5%.

No SUDS 150mm-225mm layer of Type 1 subbase in well compacted layers to a minimum fall of 1.5%.

Subgrade regulated as required to achieve a level surface.

NOTE: To ensure a neat edge detail we recommend a suitable aluminium, stone, steel, wood or brick edging. The maximum tolerance of the base should not exceed 3mm under a 1m straight edge. If existing subgrade is silty, it may be necessary to stabilise it or partially replace it with subbase/granular capping layer. If there is danger of ponding, the subbase should be laid to falls. Total subbase depth will be dictated by loading and attenuation requirements.

Technical Data

Reinforced Matting

Product	HDPE Geonet
Colour	Black
Thickness	7.1mm @ 2kPa
Tensile Strength	12kN/m longitudinal, 3.5kN/m transversal
Elongations	15% longitudinal, 40% transversal
Dimensions	1.20m x 0.90m
Packaging	25 number per pack (approximately 25m ²)
Storage	Store in a clean dry area protected from direct sunlight and extreme heat and cold



Please dispose of packaging and waste products in line with current environmental legislation

Geotextile

Product	Geo Fabric
Colour	Black
Thickness	2.4mm @ 2kPa
Water Flow	63 l/s/m ²
Tensile Strength	23Kn/M (-13%)
Elongations at Break	57.91% ±6.65 (EN ISO 10319)
CRB Puncture Resistance	23Kn/M (-13%) (EN ISO 10319)
Durability	Minimum Planned 100 years
Dimensions	1.8m x 80m
Packaging	144M ² per roll – sold in 18m ² quantities

CE 1035-CPD-ES033858

GEOTEXAN S.A

Health & Safety

Hand Protection - Wear appropriate gloves.

Eye Protection - Wear protective goggles where appropriate.

Foot Protection - Wear appropriate safety boots.

Clothing - Wear appropriate protect clothing.

It is your responsibility to ensure that you comply with all applicable health and safety legislation and guidelines.



www.resiscape.co.uk

For further information or technical advice call

0330 333 8030

Distributed by Talasey Ltd

www.talasey.co.uk

TOTALLY TALASEY

TALASEY ARE PROUD TO BRING YOU THEIR EXTENSIVE PORTFOLIO
OF THE FINEST LANDSCAPING PRODUCTS AND SOLUTIONS



Legal Notice - The information in this Document or on Talasey Ltd's Website referred to herein (the "Materials") is for guidance purposes and intended to assist you in your purchase and enjoyment of the product. Talasey Ltd will have no responsibility or liability, howsoever arising, for reliance on the information provided in the Materials. Talasey Ltd's sole liability in respect of any products shall be as outlined in the terms and conditions of purchase or in any express guarantee relating to the product purchased. Any product guarantee referenced in the Materials is subject to terms and conditions. Whilst we work closely with our partners, any arrangement you make or advise you take from them will be subject to your contract with them and Talasey Ltd has no liability in respect of any act or omission of any third party. Every effort has been taken to ensure that the information contained in the Materials is accurate, specifications and tolerances will be as contained in your order for the products, and may differ from those stated in the Materials, particularly with respect to natural materials where colours may differ from those illustrated. Guidance provided by Talasey Ltd is generic and advice should be sought in respect of local environmental and building regulations as applicable.



RSRMTG0321V4

See website for terms & conditions
info@talasey.co.uk
0330 333 8030
www.talasey.co.uk



TALASEY
GROUP